

FLAT F RECTORY CHAMBERS  
OLD CHURCH STREET  
LONDON SW3



This is an ideal pied-à-terre or a rental investment. Set on the ground floor of a well managed small apartment block, in the oldest street in Chelsea, a stones throw from the Kings Road, renowned for every facility possible.

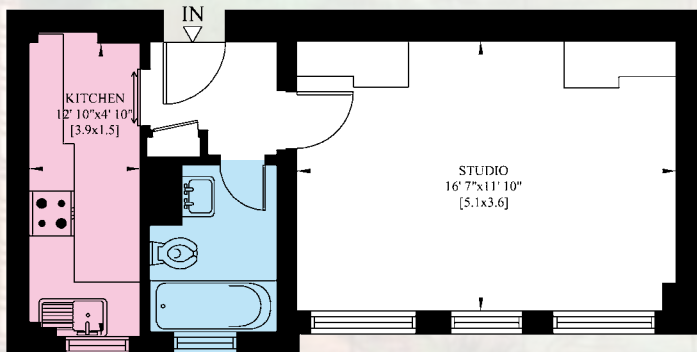
The flat has been lived in for a number of years by our clients and would now benefit from some updating. They have now decided to spend more time in the country and so, with reluctance, have decided to sell it.

**Accommodation and Facilities:**

Studio Room ■ Bathroom ■ Kitchen ■ Royal Borough of Kensington and Chelsea Parking Permit.

Approximate Gross Internal Area:

32 Sq m / 345 Sq ft



GROUND FLOOR

**TERMS**

Tenure: Leasehold - 145 years approximately

Service Charge: £1,306.07 per annum

Ground Rent: £50 per annum

Asking Price: £415,000 Subject to Contract



**Rickett Tinne**  
INDEPENDENT PROPERTY CONSULTANTS  
**020 7349 3070**  
[www.rickett-tinne.co.uk](http://www.rickett-tinne.co.uk)



Rickett Tinne Ltd., for themselves and for the vendor of this property, whose agents Rickett Tinne Ltd., are, give notice that 1. These particulars do not constitute any part of an offer or a contract. 2. All statements contained in these particulars as to this property are made without responsibility on the part of Rickett Tinne Ltd. or the vendor. 3. None of the statements contained in these particulars as to this property are relied on as statements of representations of fact. 4. Any intending purchaser must satisfy himself by inspection or otherwise as to the correctness of each of the statements contained in these particulars. 5. The vendor does not make or give, and neither Rickett Tinne Ltd. nor any person in the employ of Rickett Tinne Ltd. has any authority to make or give any representation or warranty whatever in relation to this property. September 2011